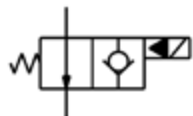
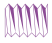



## VÁLVULAS DE CARTUCHO / CARTRIDGE VALVES / VALVES DE CARTOUCHE

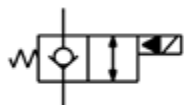
ELECTROVÁLVULAS  
SOLENOIDS  
ÉLECTRO-VALVES

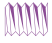

## 2/2 NORMALMENTE ABIERTA / 2/2 NORMALLY OPEN / 2/2 NORMALEMENT OUVERTE

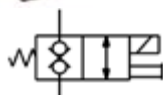


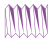

| Ref.         | Q (l/min.) |  |  | Volt.   |
|--------------|------------|---|---|---------|
| HOR570102.81 | 40         | 3/4-UNF   | 350   | 12 dc   |
| HOR570102.82 | 40         | 3/4-UNF   | 350   | 24 dc   |
| HOR570102.83 | 40         | 3/4-UNF   | 350   | 110 rac |
| HOR570102.84 | 40         | 3/4-UNF   | 350   | 220 rac |
| HOR570102.85 | 70         | 7/8-UNF   | 350   | 12 dc   |
| HOR570102.86 | 70         | 7/8-UNF   | 350   | 24 dc   |
| HOR570102.87 | 70         | 7/8-UNF   | 350   | 110 rac |
| HOR570102.88 | 70         | 7/8-UNF   | 350   | 220 rac |
| HOR570102.89 | 150        | 1" 5/16-UNF   | 350   | 12 dc   |
| HOR570102.90 | 150        | 1" 5/16-UNF   | 350   | 24 dc   |
| HOR570102.91 | 150        | 1" 5/16-UNF   | 350   | 110 rac |
| HOR570102.92 | 150        | 1" 5/16-UNF   | 350   | 220 rac |
| HOR570102.95 | 200        | 1" 5/8-UNF  | 350   | 12 dc   |
| HOR570102.96 | 200        | 1" 5/8-UNF  | 350   | 24 dc   |
| HOR570102.97 | 200        | 1" 5/8-UNF  | 350   | 110 rac |
| HOR570102.98 | 200        | 1" 5/8-UNF  | 350   | 220 rac |

## 2/2 NORMALMENTE CERRADA / 2/2 NORMALLY CLOSED / 2/2 NORMALEMENT FERME

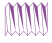



| Ref.         | Q (l/min.) |  |  | Volt.   |
|--------------|------------|---|---|---------|
| HOR570102.11 | 40         | 3/4-UNF   | 350   | 12 dc   |
| HOR570102.2  | 40         | 3/4-UNF   | 350   | 24 dc   |
| HOR570102.21 | 40         | 3/4-UNF   | 350   | 110 rac |
| HOR570102.3  | 40         | 3/4-UNF   | 350   | 220 rac |
| HOR570102.31 | 70         | 7/8-UNF   | 350   | 12 dc   |
| HOR570102.4  | 70         | 7/8-UNF   | 350   | 24 dc   |
| HOR570102.41 | 70         | 7/8-UNF   | 350   | 110 rac |
| HOR570102.5  | 70         | 7/8-UNF   | 350   | 220 rac |
| HOR570102.51 | 150        | 1" 5/16-UNF   | 350   | 12 dc   |
| HOR570102.6  | 150        | 1" 5/16-UNF   | 350   | 24 dc   |
| HOR570102.61 | 150        | 1" 5/16-UNF   | 350   | 110 rac |
| HOR570102.7  | 150        | 1" 5/16-UNF   | 350   | 220 rac |
| HOR570102.75 | 200        | 1" 5/8-UNF  | 350   | 12 dc   |
| HOR570102.76 | 200        | 1" 5/8-UNF  | 350   | 24 dc   |
| HOR570102.77 | 200        | 1" 5/8-UNF  | 350   | 110 rac |
| HOR570102.78 | 200        | 1" 5/8-UNF  | 350   | 220 rac |

2/2 NORMALMENTE CERRADA DOBLE ANTIRRETORNO / 2/2 S NORMALLY CLOSED DOUBL. CHECK VALVE / 2/2  
NORMALEMENT FERME DOUBLE ANTI-RETOUR

| Ref.      | Q (l/min.) |  |  | Volt.   |
|-----------|------------|---|---|---------|
| HOR610001 | 40         | 3/4-UNF   | 350   | 12 dc   |
| HOR610002 | 40         | 3/4-UNF   | 350   | 24 dc   |
| HOR610003 | 40         | 3/4-UNF   | 350   | 110 rac |
| HOR610004 | 40         | 3/4-UNF   | 350   | 220 rac |

2/2 NORMALMENTE ABIERTA DOBLE ANTIRRETORNO / 2/2 S NORMALLY OPEN DOUBL. CHECK VALVE / 2/2  
NORMALEMENT OUVERTE DOUBLE ANTI-RETOUR

| Ref.      | Q (l/min.) |  |  | Volt.   |
|-----------|------------|---|---|---------|
| HOR620001 | 40         | 3/4-UNF   | 350   | 12 dc   |
| HOR620002 | 40         | 3/4-UNF   | 350   | 24 dc   |
| HOR620003 | 40         | 3/4-UNF   | 350   | 110 rac |
| HOR620004 | 40         | 3/4-UNF   | 350   | 220 rac |

Ver Bobinas página 87 / See Coils page 87 / Voir Bobines page 87